



QUICKVIEW
360



WINCAN

1 MANHOLE EVERY 5 MINUTES

Manhole inspection doesn't have to be costly and tedious. With the Quickview 360, a single operator can scan up to 80 manholes per day. Results stream to the cloud for easy storage, sharing and analysis.

The Quickview 360 captures 4K panoramic video, uses AI* to automate defect and feature coding, and auto-generates a report. It also delivers a full 3D model that can be measured, annotated and exported to CAD.

▶ AI PARTS DETECTION* COMING SOON

▶ REPORTS GENERATED AUTOMATICALLY

▶ WIRELESS UPLOAD TO CLOUD

▶ VIRTUAL PAN/TILT VIDEO FOOTAGE

▶ 3D MODEL WITH MEASURING TOOLS

▶ POINT CLOUD EXPORT TO CAD



STREAMLINE MANHOLE INSPECTION

telescoping
10m / 32.8' pole

full-day
rechargeable
battery

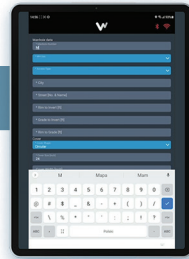
Wi-Fi
communication
with tablet app

twin
cameras
for 360-deg
footage

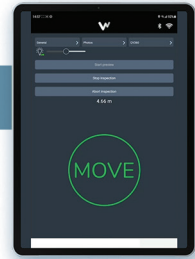
rangefinder
to measure
depth and
guide descent

super-bright
LED lamps

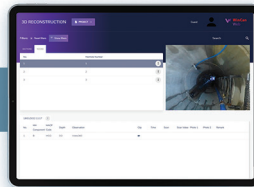
winch
for smooth lowering



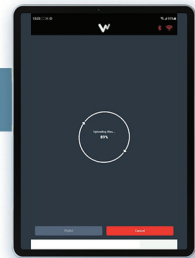
Enter basic inspection details like asset ID, inspector, address, etc.



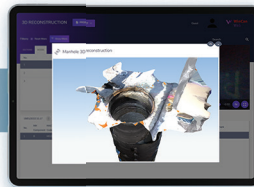
Lower camera into manhole, following prompts from app.



Review footage on WinCan Web with virtual pan/tilt. Analyze, edit and share inspections; download reports.



When done, upload inspection to WinCan Web via wireless broadband.



Measure, annotate and export a 3D model of the manhole.

HINTS:

- Tablet not included
- WinCan Web can then be used after the 1-year subscription with a paid subscription

COMPATIBLE WITH:

- iPad 10th gen - min. iOS 15.6.1 (recommended)
- iPhone 12 - min. iOS 17.1.2
- Samsung Galaxy Tab S8 min. Android 13

KIT CONTENTS

camera head • camera case • camera sleeve
camera cradle • charger • 10m / 32.8' telescoping pole
winch • tablet app • 1-year WinCan Web Flex subscription

WINCAN / IDEX UK LTD · Unit 10, Woking Business Park
Albert Drive, Woking – Surrey,
GU21 5JY, United Kingdom

☎ +44 1483 762 222 ✉ sales.wincan@idexcorp.com
🌐 www.wincan.com

Issue: February 2026 - Subject to change

*Feature available soon, additional cost can occur